

UNIVERSITAS

SPRING 2015



MEET SLU'S

Laura

FEATURES

10

Meet the President

Learn more about SLU's 33rd president,
Dr. Fred P. Pestello.



SLU Plans New and Improved Housing

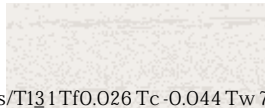
Construction of a new 450-unit residential building, valued at \$43.8 million, is planned for completion by 2016. The building will feature modern amenities and green spaces, providing improved housing for students. The project is part of SLU's broader strategic planning process to enhance campus infrastructure and student life.

Strategic Planning Process Underway

The strategic planning process is currently underway, focusing on charting SLU's direction in a complicated higher education environment and identifying priorities for a SLU bicentennial comprehensive capital plan.

1 Charting SLU's direction in a complicated higher education environment

2 Identifying priorities for a SLU bicentennial comprehensive capital



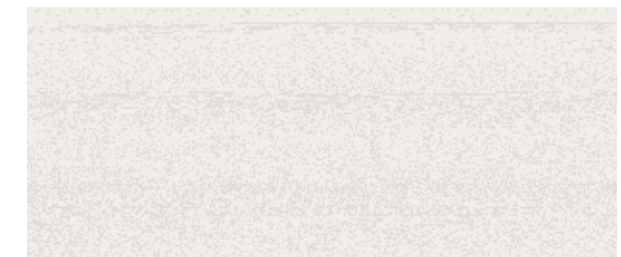
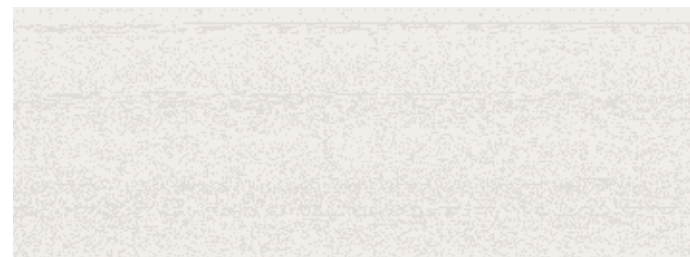
Awards & Honors

2011

Three recipients received Fulbright English teaching assistantships: (A&S'14), (Cook '12) and (A&S'14). (A&S'14) received a Fulbright study/research grant.

2011

professor emeritus of mathematics and computer science.



Rankings

SERVICE

WASHINGTON MONTHLY "BEST SCHOOLS FOR COMMUNITY SERVICE"

The University was listed on *Washington Monthly's* list of national universities as the top school in the country for community service. This marks the fourth consecutive year SLU has placed in the top five. The Washington, D.C., magazine ranks schools based on their contribution to the public good in three broad categories: social mobility, research and service.

PRESIDENT'S COMMUNITY SERVICE HONOR ROLL

For the 10th year, SLU has been named to the President's Higher Education Community Service Honor Roll, the highest federal recognition a school can achieve for its commitment to service-learning and community engagement. SLU is the only campus in Missouri named to the honor roll with distinction in the area of interfaith service.

TEACH FOR AMERICA'S "TOP CONTRIBUTING SCHOOLS"

Saint Louis University made its debut on Teach For America's seventh annual list of colleges and universities. SLU made the top 20 list for medium-sized colleges and universities, contributing 17 alumni to the most diverse teaching group in the organization's 25-year history.

CARNEGIE FOUNDATION

ETC.

THE PRINCETON REVIEW'S "BEST COLLEGES FOR VALUE"

KIPLINGER'S "BEST VALUES IN PRIVATE COLLEGES"

SLU was named one of Kiplinger's "Best Values in Private Colleges" for 2015. The list includes the top 300 private colleges in the country.

Kiplinger's assesses academic quality, value, and student life.

.....

SLU Theatre

The Saint Louis University Theatre
2014-15 season is underway.

As You Like It

BY WILLIAMSHAKESPEARE

2, 2 1, 2

One of Shakespeare's most beloved romantic comedies, the tale of Rosalind and Orlando is a classic love story.

Performances are at 8 p.m., except for Sunday performances at 2 p.m., at Xavier Theatre.

MOCRA

▼ a a

*Images from the
Phenomenal
World*

10

Regina DeLuise's photos look at the ordinary surroundings of Bhutan's culture, where devotion is found in every aspect of life.



"Taksang Palphug Monastery ('Tiger's Nest'), Bhutan," Regina DeLuise

.....

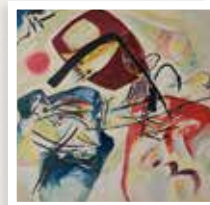
SLUMA

▼ a a

*Selections
from the 20th
Century Print
and Photography
Permanent
Collection*

2

Masterpieces by more than 40 of the most famous 20th century icons – including Picasso, Chagall and Warhol – illustrate the development of the major art movements from 1950 to today.



"Picture With a Black Arch," Wassily Kandinsky

A candid conversation with SLU's new president,
Dr. Fred P. Pestello.

MEET THE PRESIDENT

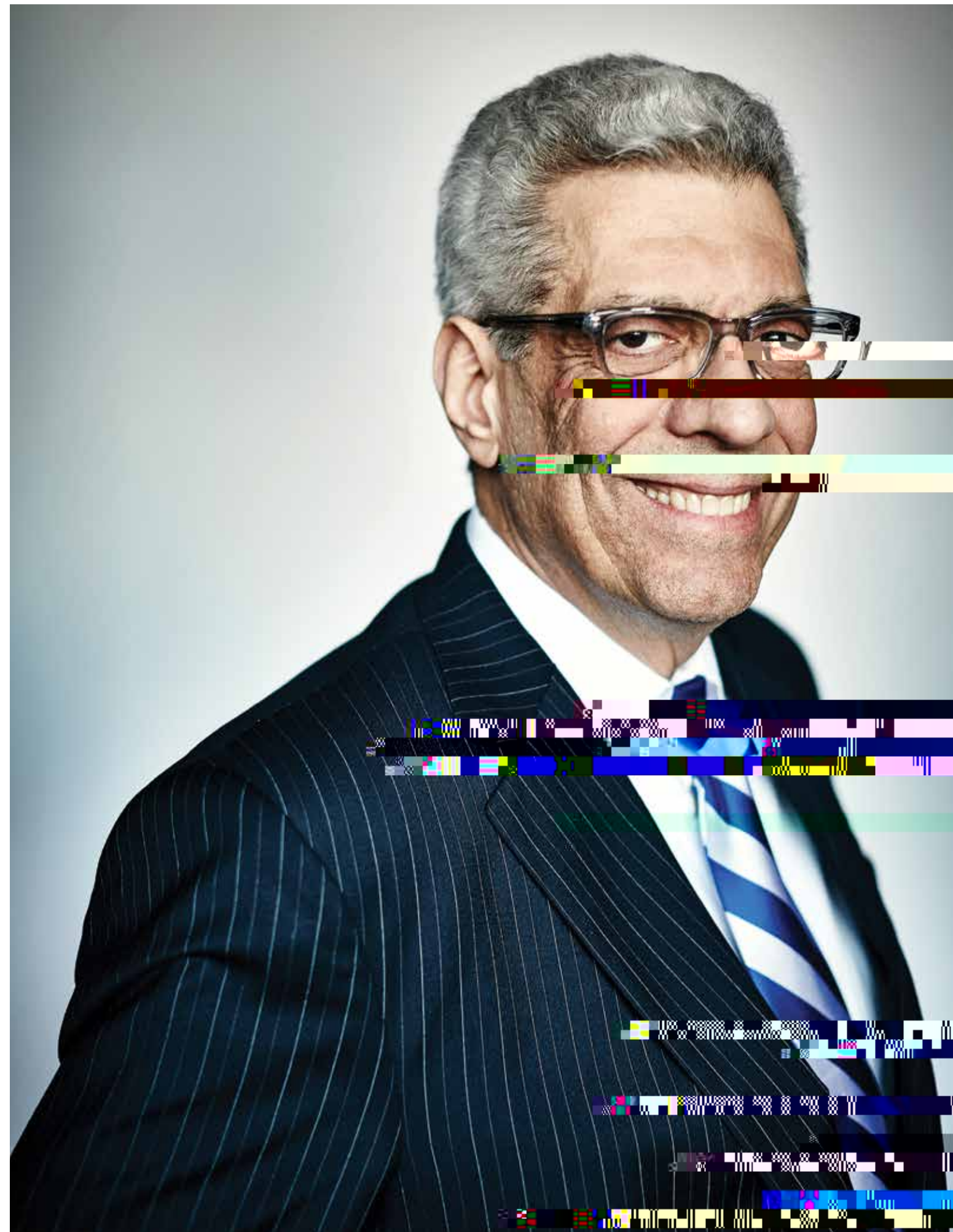
— BY LAURA GEISER



■ Pestello at new student convocation at Chaifetz Arena in August

W

... y la ...
... 33 ... a ... a -
... a yea ... 5 ... y ...
... xcc ... a ... w ... f ...
... a ... ga ... a ... 5 ... f ...
... ea g ... ea c ...
... a ... a ... xcc ... c ... a ... f ...
... c g ... g ... 30-ga ... a ...
... g13 ... we ... e ... f ...
... a ... 5 ... a ... a ... ea ...
... a g ... 5 ... e ... ccc ... w ... a ... wa ...
... a ... a ... e ... f ... ea ... f ... y ...
... a ... w ... b ... a ... w ... e ... w ... g ... a ...
... a ... e ... y ... e ... e ... b ... f ... g ... 5 ...
... e ... y ... ea ... a ... a ... b ... a ...
... e ... 5 ... y ... g-a ... g ... e ... la ...
... - ... g ... a w ... Universit ...



FIRST IMPRESSIONS

a a a a a a
 a b f e . f i , e a
 e e e w e e u y w
 a e e e a g a c e f
 e f . e w e e g a w a e
 u y a c w a b g , b a a c
 w a a c . e a a a e a c e ,
 a w e e e e f i f a a
 e e b e e e e c f a g e w
 e a c e .
 a e e a a a e a e
 e e a e c c , e e a y
 a e a a w e a e , e a c
 a a c w a e w e a e a
 w . a e a e e e g
 a g .
 a y e e e e e -
 a a f e w a e e
 a a w e e , b e a e e
 k a e ' e g g a b e e
 a e a e e a a e e a
 f 2,000- e a f a .
 e .



Pestello At a Glance

PERSONAL DETAILS
 Cleveland native
 62 years old
 Married to Dr. Frances Pestello
CHILDREN: Vitina and Freddie

EDUCATION
 Ph.D., 1985, University of Akron-Kent State University, Sociology
 M.A., 1981, University of Akron, Sociology
 B.A., 1974, John Carroll University, Sociology

PROFESSIONAL HISTORY
2008-14: Professor of Sociology, Le Moyne College
2000-08: Professor of Sociology, University of Dayton
1991-2000: Associate Professor of Sociology, University of Dayton
1985-91: Assistant Professor of Sociology, University of Dayton
1984-85: Instructor, University of Dayton

ADMINISTRATIVE EXPERIENCE
2008-14: President, Le Moyne College
2001-08: Provost and Senior Vice President for Educational Affairs, University of Dayton
January-June 2001: Provost Designate, University of Dayton
1997-2000: Associate Dean, College of Arts and Sciences, University of Dayton
1993-97: Chair, Department of Sociology, Anthropology and Social Work, University of Dayton

PHOTOS BY STEVE DOLAN, KEVIN LOWDER AND SARAH CARMODY



ON THE JOB

a a , e y e l e e . c . y w e , a ,
 a a y a c y e e e , y
 a a a g a c y e e e , l y
 e . e e e c y e c e a e
 a a a y f g a , f w

- Clockwise from top left :*
- Meeting with retired faculty members at a luncheon in December
 - Posing with his wife Fran and their Homecoming parade golf cart
 - Taking a selfie with students at a Fall Welcome event
 - Addressing members of Ori amme
 - Greeting student fans at a Billiken basketball game in February
 - Meeting members of Ori amme in August



Outside of academia, what was your favorite job?

I enjoyed my time in radio; that was a lot of fun.

I started in radio during my senior year of college and then worked in commercial broadcasting for two years after graduation. I did everything – engineering, selling airtime, being a disc jockey, reading news and hosting talk shows. Anything you could do on radio, I did. I most enjoyed the talk/interview shows.

Who are your role models?

I've been blessed with a number of role models and mentors who have taken the time and trouble to invest in my development. One in particular is Brother Ray Fitz, the longtime president of the University of Dayton. He is now the Father Ferree Professor of Social Justice in the Fitz Center for Leadership in Community. Brother Ray was honored in February with the Rev. Theodore M. Hesburgh, C.S.C., Award from the Association of Catholic Colleges and Universities for his work as a leader in Catholic higher education.

... a y b g x e e e w a

a " e' e a e . e a y e y e w
 e " e e e a e e e e .
 e " e a e a , w a e e e w e
 e " e a e f y e e y g g e
 e " e a b y e e e a
 e " e a f a c a y e e b e ,
 a , e e e e e e e e e e l e g
 a e a g 5 a a e g e e a
 a " a y
 e " a e y a g a a e , e e
 a e e e a y a e e e e a e
 5 e y w e g a . e e e a "

... a f e a " a f
 e e y e e c " e y e
 a " e e e e g f y e e e y e
 " y e a e c a e e g y e
 e y a l e " w e e e f e ,
 w a a e a w e w e e f e g
 e c e a a a a e y e e f e
 " g. e e e a e , w e e a y 200
 g a a e , w a e g w a e y e a e a
 w a e y a c . e f . a e c a c a ?
 e e a l e , " e e g a a e -
 e e a a e y e e f g a a
 e e e e e l a e e a y



a f e a a e f e w
 a f e a a e f e w
 a g e a w y e g c c u w e
 a e e a a w e e g e .
 e a c e w e u a , -
 e f e e e f e e e e
 a , a y w e a c y u y
 e e w a w g g . e y a c e e
 c c e w , w e e a e a e e e g e .
 e e e f e g a w e a y f
 e e e . e e e e a e a c w
 , w w a e c c e w c g a
 e g .
 e e e e f e g , e u a
 f a w y a b y e e a e
 e e w e y e e e e e e f . e g e g g e e -
 a w e a f e c y w w e w g a a u a y
 g . e y e f a e a e e e , f , w e a
 e . e a f e e e e a a . w e
 c e w e .

- Clockwise from top left :*
- Posing with alumnus David Corcoran (A&S '64) during Homecoming weekend
 - Speaking to Make A Difference Day volunteers at Robert R. Hermann Stadium in October
 - Meeting with a community member at the North Campus Organization site on Make A Difference Day
 - Surrounded by the men's soccer team on inauguration day
 - Speaking to students on Make A Difference Day

: e a , e e a , a y f w e e g e e ,
 a e e a a e y w e e a g . a w e e a y e e a .
 e f e e e g e w a e . a a g a
 a d y f a e a e a w e a w y a u y e e e
 e a a e a e c c e w a f
 w e e e , c g e w a w , e c g a b y
 e c e e , e e a g a a f a u a a e c g
 f a g .

g e e e a e w e e u l e a f a
 a e a w y e e g c c u w e
 e e .
 e e e e e , e a y e a c -
 a g e c e a e e a e f .
 e u a u g u b a w e a b y
 a e e e . e y e e e f e e c
 a g e e a e e e e e c
 b y e .
 a e e e e a w u
 a c e ? a u . g a e y e
 c a f e f a e a e e a -
 e , w e e a b e a a g a b e a u g
 e e g a a y w g e e , w
 w e e a e e a e c c a , e w
 a e w f e a a . w h a c e c -
 y e l e a a . e l e a a e y
 a c a e e e e a e . a -
 e a e a e e e e f e b u
 a a g e e a g e e b e .
 g e e c f e c , w a y
 e e a a g e e a e e w
 w e l e e e e e y a a
 c e a e e c e e e . e c
 e e e e e e c c a e a f y
 a g a e c . 18 . e e w a
 e y w a a g .
 w a g a e f w e , b
 e e a e e e e a a e f e g e -
 e , e c y a a f e e y e e a
 a u a y u e a y w y a
 a w u a e w y u g a y
 g e e , a c a y e e a e f b c
 a d y e .
 e e a a e w e , w e e e
 e y f e a , e e a g y a e
 a e e e f a , w a e a . g
 a e a e e e e a w , f a
 f .

SLU AND ST. LOUIS

B . 3 B1 . 1 . 3 11 B 1



From left :
 ■ Freddie Fran,
 Fred and Vitina

e wa e ee, w ee a a a g f da a ee , a
 w e e w ea , f e . e , w e c a y wa e
 w g g e e f e a a e c w . g e c e e e a e a
 e .
 a e e b g e e a ca . 5 a e . c .
 wa e e g e g l e a w e .
 e w e e a e e a e e f w e e g a w
 e y a c e a a e a g l e a a e . a e c l e a a
 a e e a i s a w e f a e e . g e e e g e e g
 a e e a e f w e e a a e g 5 e e e e a
 a e w e a a a a a y g .
 a e e y e e f e a a e e g f e e a e f
 a e c e g a 5 e e w e e , a e e e e e e
 a e e a g l e e c a e g e g g e g , a y
 e e e a g 5 a e e g a e a g e e e f e e
 e e g e f e e . e e f e a e e e e
 e f e e e g a e e b y w a e a g 5 . a y

a g e i a a g a a e f e 5 e y f a y , a b e
 a f f e a g e e w f e e f e e y
 f a g e w g e c y f e a e f e a e e .
 a e e e e e e a e w e e e g e a l e g
 b g w e e e a e y e a g g a e e
 e a e e a a e a e 5 a e g a e a f e
 a a e a l e a . e e e a e a g e e
 w g . a a g 5 .



PHOTOS BY STEVE DOLAN

*Higher Purpose.
Greater Good.*

THE 2014
INAUGURAL A

ca y f g
 e e . 3,
 a e a y 2,500 e e a e
 g e a e e a



■ Pestello delivers his inaugural address.

W e e a y
 g e g e ,
 c g e a e
 g e a e ,
 e a e f c c
 g a e , g e e f f c a ,
 a e l e f e g y a e g a e -
 f f e e y e w a e e f e a
 a f l e e a y g e e g
 e w a e w c g e e y
 hola, mis amigos en Madrid.
 e e , e a y a y a
 g e y a y a
 f e y a e
 a a e a w l e e e
 a f e e y g y e f g .
 w a a e y l e b y e
 y e a e x e a
 e y a e e l e f e
 l a f e e , e g e a
 g a c a g e c e e , e
 e f g . 5 a a e e (7 . 0 4 () 6 e e 0 w - 0 . 0 2 2 - 1 . 2 1 (1 4 (6 e) 1 9 . 8) 1 0 (8 e 9 . 6 e 4) 1 0 (3 . 6 () 1 . 3 (e) 3 .



1818, a
 c,
 g e a e g e



■ Pestello sits with members of

|||||

w e e e w a c a b a
a g x e e . e x a -
g e e a a a u u p
g a e e a a c e a o g
e y u g e a e .





ST. LOUIS NEIGHBORHOOD
IS THE PLACE TO
BE IN ST. LOUIS.

The New Midtown

— BY SARA HENDRIXSON
ILLUSTRATION BY
MICHAEL HIRSHON

For years, Saint Louis University's Midtown neighborhood has made its reputation as the place in St. Louis to see a show. And with good reason – the area is home to Grand Center gems such as the Fabulous Fox Theatre, Powell Symphony Hall and Chaifetz Arena. But that entertainment-only reputation is about to change because of a little Swedish word:

S... g... y... w...
... a... fa... a... be...
... a... a... g... ga...
... w... a... g... g...
... y... l... c... y...
... a... ca... f... a... fa... x...
... ca... e... f... w... b... e...
... g... a... w... a... e... e...
... f... f... c... a... a... f... a... b... f... e...
... a... a... b... g... e... w... e...
... e... w... c...
... ca... e... a... y... e... y...
... e... e... ca... ca... .

CO... E... IN... I... A... ION AND INNO... A... ION
... g... e... l... e... l... e... w... ,
... e... a... e... a... a... e... a...
... g... ca... , e... x... a... a...
... y... a... 200a... ce... a...
... b... e... ca... e... l... e... a... b...
... a... e... g... g... e... a... ce... e...
... a... e... e... e... c... y... e... e... c... w...
... e... g... a... e... e... , c... -
... g... g... 5... e... y...
... e... w... , e... e... a... e... f...
... e... x... a... e... a... a... ga... e...
... f... e... c... , w... c... w... e... e... c...
... a... g... a... ca... e... e...
... e... x... a... e... a... a... e... e... f... e... by...
... e... g... ca... a... c... b... e... e... ,



Therese (Rolufs) Trelz (Law)
201

1988

John Beulick (Law)
201

James Carmody (Law)
201

Julie (Emmerich) O'Keefe (Law)
201

Brett Vuagniaux (Cook)

David Wright (Grad, Law)

1 / . ()

-2 . () -21 . () -22 . () -1 . () -2 . () -0.

(Parks'32)
(Dent'36)
(Parks'38)
(Med'39)
(Med'39)
() (Nurs'39)
(Law'39)
(Parks'40)
(A&S'40)
(Parks'40)
(Cook'41)
(Cook'41)

O Co.1(s)67('4)-91.82)-50.92))TJL/TQ,1(1)20.227)Tc.-0.02T Tw /Spark<-8B44aIText<FEFF004D>>> BDC -0.902 -1.578Td (M)Tj BMC260(T)ITd40)B.(S) and 16.7(22-69)a-21(9)e)06.7(0)TJ 5(0)14 1-Tf)02267 Tc-1.578 Td(2)-2702(L)-100.2(F)-79.5(C)-83(0)-81 0)022.38(1(s)-67('4)9 23(8)9)9.6(28)2 0.902D Td (2)24.9(. R)-0.8(o)-15.6(b-3816 TText<FEFF004D>>> BDC -0.902 -1.578 Td (M)280.1 (l(a)-2568 20)5(0-0.0g)280

- ... (Parks '68)
- ... (E&PS '68)
- ... (Parks '68)
- ... (IT '68)
- ... (Parks '68)
- ... (IT '68)
- ... (A&S '69)
- ... (Law '69)



